

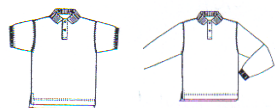
## CCS Boy's Uniform Page

### Boy's General Uniform Guidelines

- All uniform tops must have the school logo purchased from one of these suppliers: Schoolbelles, Lands' End, French Toast and/or CCS Front office.
- All other non-logo items can be purchased from a uniform supplier or other manufacture as long as the standard CCS uniform look is achieved.
- School uniform colors: White, Navy, Hunter Green, Light Blue, Light Yellow and Khaki.
- Clothing Fit: Care must be taken to have clothing appropriately sized. Items should not be too big, too snug or too small.
- Shirts: Short sleeve shirts must have a sleeve that reaches 1/3 of the way between the shoulder and the elbow.
- Sweatshirts and Sweaters: Students may wear logo sweatshirts and logo sweaters for warmth in the class. Coats and jackets are not to be worn in the school throughout the day.
- Belts: If slacks have visible belt loops, a black, brown, navy, hunter green or khaki belt must be worn. Suspenders are not to be worn.
- Shoes: Choose any dress, dress casual or athletic shoes that cover the full foot. Dress boots are acceptable for students in grades 6-12. Crocs, toeless shoes, sandals, insulated or rubber boots are examples of shoes that are not allowed for health and safety reasons. If a shoe is outlandish in style or color or deemed unsafe, we reserve the right to not allow a shoe. When choosing your shoe, please be considerate of our janitorial staff by purchasing non-scuffing shoes. Keep in mind that younger students will be wearing their shoes outside and in the gym for recess.
- Socks: Socks are required. Socks must be visible above the shoe being worn and must be school uniform colors or black.
- Hats: No hats of any type are to be worn at school.
- Jewelry: No jewelry of any kind is allowed to be worn at school with the exception of an abstinence ring (with parent letter on file) or a class ring.
- Tattoos- (permanent or temporary) are not acceptable. Students are not to draw on themselves or on another student.
- Hair: Hair should be neat and well-groomed at all times.
- Layered clothing guidelines: Logo short sleeved shirts may be worn over uniform color long sleeved shirts. If short sleeved undershirts are desired, they must be of school uniform colors or the gray school PE shirt. Imprints on t-shirts must not be visible through the outer layer.

### Boy's Uniform Items

**All uniform tops must have the school logo. Schoolbelles, Lands' End, French Toast and the CCS office carry our logo items. CCS carries new and used logo items. Pictures shown are for examples only.**



#### SHIRTS – logo required

Polo Shirt (long sleeve or short sleeve)

Turtleneck

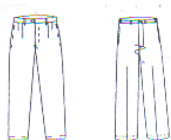
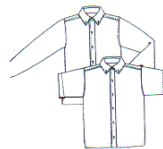
Mock Turtleneck

*Acceptable colors: White, Navy, Light Blue, Hunter Green and Light Yellow*

Oxford Shirt (long sleeve or short sleeve)

Classic Dress Shirt (long sleeve or short sleeve)

*Acceptable colors: White, Light Blue and Light Yellow*



#### PANTS

Pleated or plain front pant (chinos/twill)

Options: reinforced knee, elastic waist and corduroy

*Acceptable colors: Navy, Khaki*

*Items not allowed: cargo pockets, light or dark colored khaki, dress pants, navy or khaki jeans, joggers, trim fitting, low-rise (skinny) pants*

#### ITEMS TO BE WORN FOR WARMTH – logo required (no hoods allowed)

Sweatshirt (*Acceptable colors: Navy and Hunter Green*)

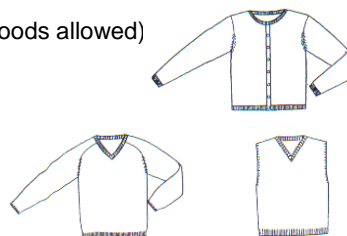
Blazer (*Acceptable color: Navy*)

Long Sleeve Cardigan Sweater (zipper or button)

V-Neck Sweater

V-Neck Pullover Sweater

*Acceptable colors: White, Navy and Hunter Green*



#### PE WEAR (Grades 6-10) – Items available at CCS

Solid navy nylon athletic pants (may have white stripes)

CCS Athletic PE T-shirt. (Available at CCS)

Athletic shoes

#### Preferred Uniform Vendors

All logo items must be purchased from these vendors.

##### Calvary Christian School

- Visit the school office for new and used items

##### French Toast

- Pick up a Catalog from the office at CCS
- Call for a catalog 800-373-6248
- Pants are available in local stores and online
- frenchtoast.com Source Code: QS47EUT

##### Lands' End

- For a catalog call 1-800-469-2222
- Preferred School No.: 9000-7750-4
- landsend.com/school

##### Schoolbelles

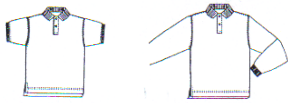
- Pick up a Buying Guide from the office at CCS
- Call for a catalog 1-888-637-3037 or 317-255-5275
- schoolbelles.com School Code: 1798
- Visit Indianapolis location

### Girl's General Uniform Guidelines

- All uniform tops must have the school logo purchased from one of these suppliers: Schoolbelles, Lands' End, French Toast and/or CCS front office.
- All other non-logo items can be purchased from a uniform supplier or other manufacture as long as the standard CCS uniform look is achieved.
- School Uniform Colors: White, Navy, Hunter Green, Light Blue, Light Yellow and Khaki.
- Clothing Fit: Care must be taken to have clothing appropriately sized. Items should not be too big, too snug or too small.
- Shirts/Blouses: Short sleeve shirts must have a sleeve that reaches 1/3 of the way between the shoulder and the elbow.
- Skirts and Jumper Length: Because of rapid growth, skirt and jumper length at the beginning of the school year should be at the bottom of the knee cap in grades PK-5 so that with growth it is no higher than the top of the knee as the year progresses. In grades 6-12, skirt lengths must cover the kneecap all year long.
- Sweatshirts and Sweaters: Students may wear logo sweatshirts and logo sweaters for warmth in the class. Coats and jackets are not to be worn in the school throughout the day.
- Belts: If skirts have visible belt loops, a black, brown, navy, hunter green or khaki belt must be worn. Suspenders are not to be worn.
- Shoes: Choose any dress, dress casual or athletic shoes that cover the full foot. Dress boots are acceptable for students in grades 6-12. Crocs, toeless shoes, sandals, insulated or rubber boots are examples of shoes that are not allowed for health and safety reasons. If a shoe is outlandish in style or color or deemed unsafe, we reserve the right to not allow a shoe. When choosing your shoe, please be considerate of our janitorial staff by purchasing non-scuffing shoes. Keep in mind that younger students will be wearing their shoes outside and in the gym for recess.
- Socks/Hosiery: Hose, tights or socks are required (grades prek-5). Socks must be visible above the shoe being worn and must be school uniform colors or black. Leggings (footless tights) are acceptable. Tights, leggings and hose (no lace, fishnets, jean, etc.) must be of a single uniform color. Tights and leggings are to be opaque.
- Hats: No hats of any type are to be worn at school.
- Jewelry: No jewelry of any kind is allowed to be worn at school with the exception of an abstinence ring (with parent letter on file) or a class ring.
- Makeup/Tattoos: Students in grades 6<sup>th</sup>-12<sup>th</sup> are permitted to wear blemish cover-up only. Tattoos (permanent or temporary) are not acceptable. Students are not to draw on themselves or on another student. If fingernail polish is worn, it must be clear or white French tips only.
- Layered clothing guidelines: Logo short sleeved shirts may be worn over uniform color long sleeved shirts. If short sleeved undershirts are desired, they must be of school uniform colors or the gray school PE shirt. Imprints on t-shirts must not be visible through the outer layer.

### Girl's Uniform Items

All uniform tops must have the school logo. Schoolbelles, Lands' End, French Toast and the CCS office carry our logo items. CCS carries new and used logo items. Pictures shown are for examples only.



#### SHIRTS - logo required

Polo Shirt (long sleeve or short sleeve)

Turtleneck

Mock Turtleneck

Acceptable colors: White, Navy, Light Blue, Hunter Green and Light Yellow

Oxford Shirt (long sleeve or short sleeve)  
Peter Pan Blouse (long sleeve or short sleeve)  
Acceptable colors: White, Light Blue and Light Yellow



#### SKIRTS and JUMPERS

Pleated or A-Line Skirt

Pleated, Drop Waist or Solid Jumper

CCS Plaid Skirts and Jumpers (Available only through Schoolbelles or used items from CCS)

Acceptable Colors: Navy, Khaki and CCS Plaid (Available through Schoolbelles)

Bike shorts and leggings (can be worn under skirt) Colors: See General Girl's Guidelines

Items not allowed: dresses, sweater material, blue or khaki colored jean skirts, homemade items, items above the knee (6<sup>th</sup>-12<sup>th</sup>), very snug items, light or dark colored khaki.

#### ITEMS TO BE WORN FOR WARMTH – logo required (no hoods allowed)

Sweatshirt (Acceptable colors: Navy and Hunter Green)

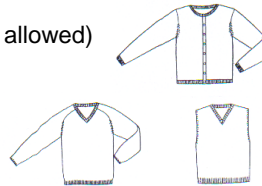
Blazer (Acceptable color: Navy)

Long Sleeve Fine Gauge Cardigan or V-Neck Sweater

Long Sleeve Cardigan Sweater (zipper or button)

V-Neck Sweater Vest

Acceptable colors: White, Navy and Hunter Green



#### PE WEAR (Grades 6-10) – Items available at CCS

Navy Culottes (available from Schoolbelles or CCS)

CCS Athletic PE T-shirts (Available at CCS)

Athletic shoes

#### Preferred Uniform Vendors

All logo items must be purchased from these vendors.

##### Calvary Christian School

- Visit the school office for new and used items

##### French Toast

- Pick up a Catalog from the office at CCS
- Call for a catalog 800-373-6248
- Skirts and jumpers are available in local stores and online
- frenchtoast.com QS47EUT

##### Lands' End

- For a catalog call 1-800-469-2222
- Preferred School No.: 9000-7750-4
- landsend.com/school

##### Schoolbelles

- Pick up a Buying Guide from the office at CCS
- Call for a catalog 1-888-637-3037 or 317-255-5275
- schoolbelles.com School Code: 1798
- Visit Indianapolis Location